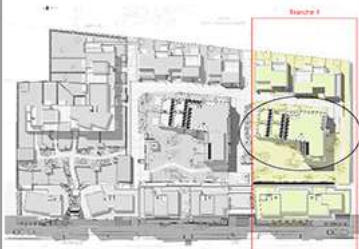
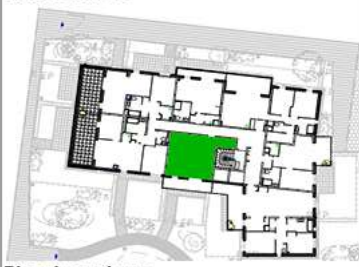


Bâtiment B - 1er Etage



Plan de masse



Plan de repérage

Logement B - 1.1 - T1 - SHA 37.32 m²

CELLIER	2.51 m ²	
ENTREE	1.91 m ²	
PLACARD	0.60 m ²	
SDB - WC	5.12 m ²	
SEJOUR CUISINE	27.18 m ²	37.32 m²
BALCON	9.71 m ²	9.71 m²

Document non contractuel

