

ESQUISSE TRANSFORMATION D'UNE MAISON EN DEUX LOGEMENTS

67, 69 rue Pasteur
62680 MERICOURT

IND B : Modif fenêtres sur rue du séjour en rdc

IND C : + Coupe seuil balcon

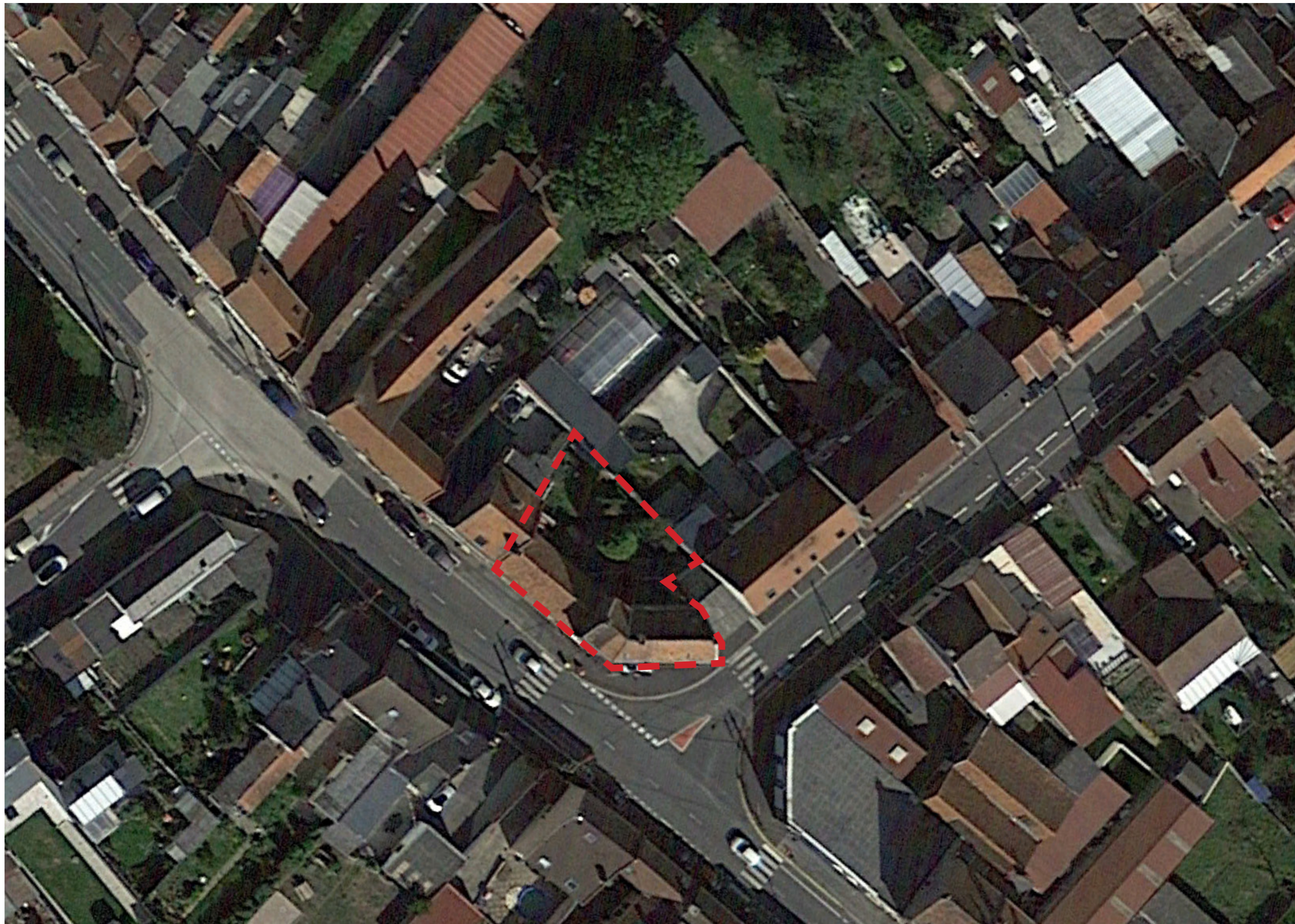
IND D : modif plans et façades

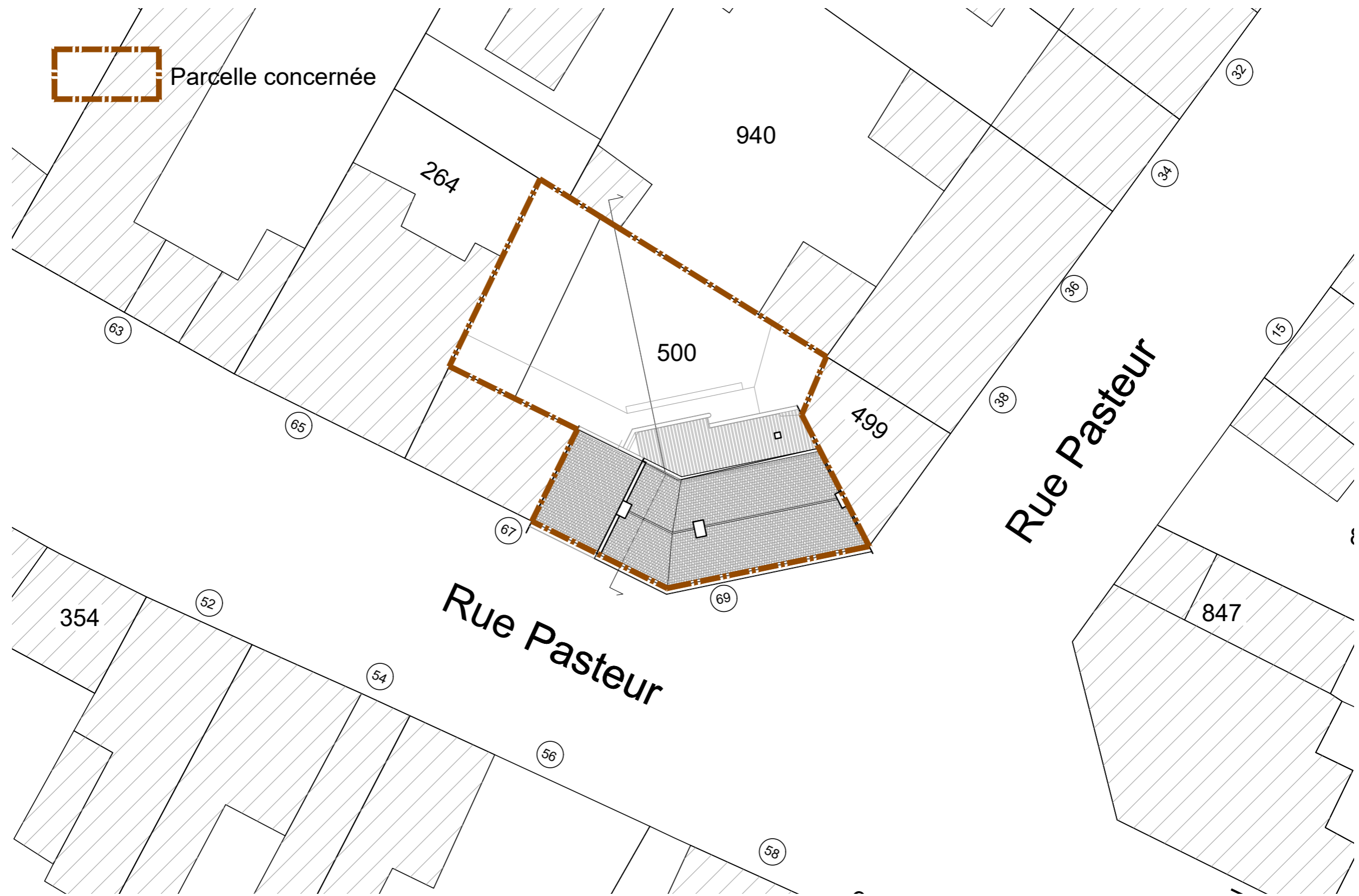
ND E : modif plans rdc, comble et façade rue

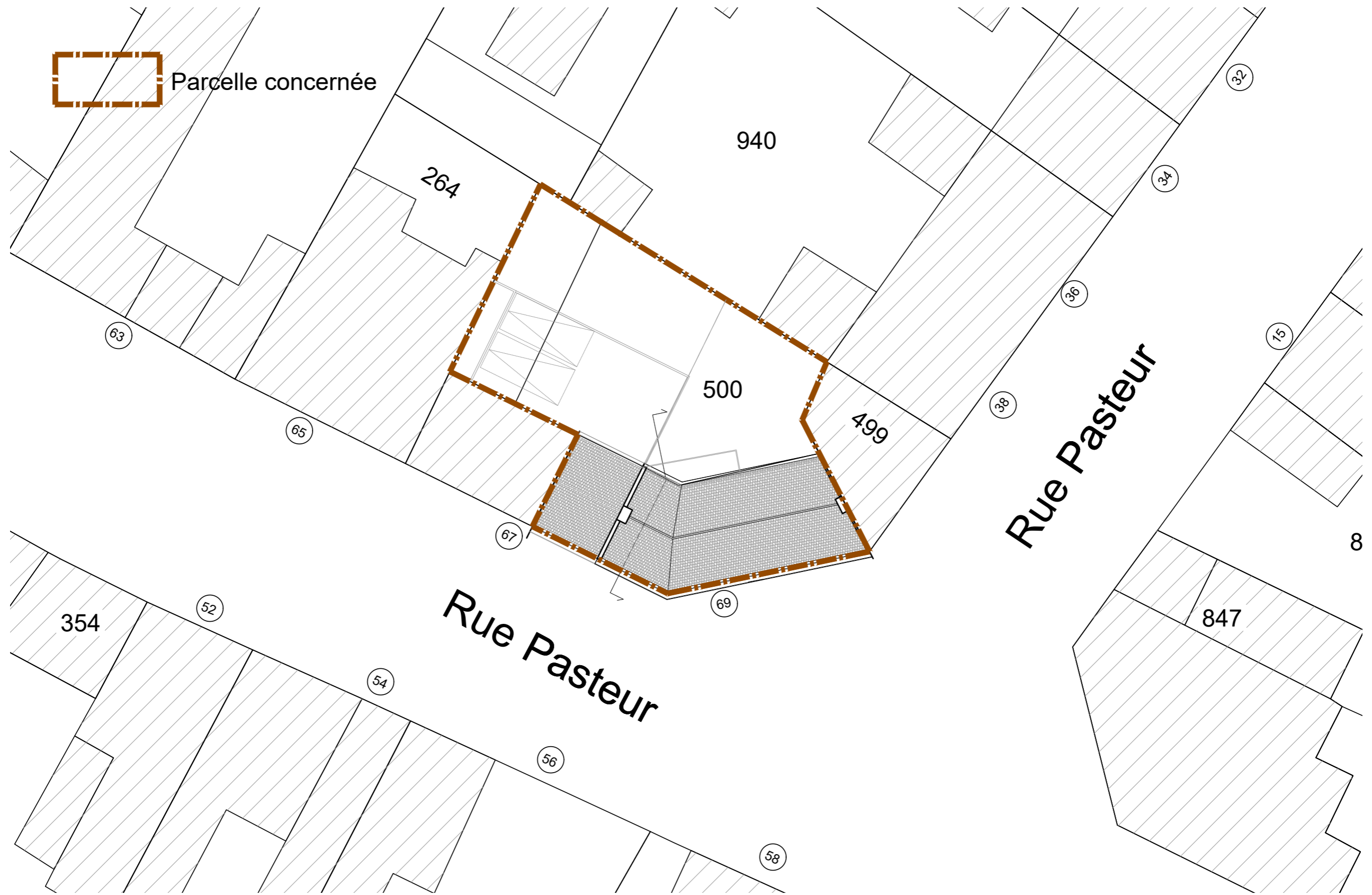


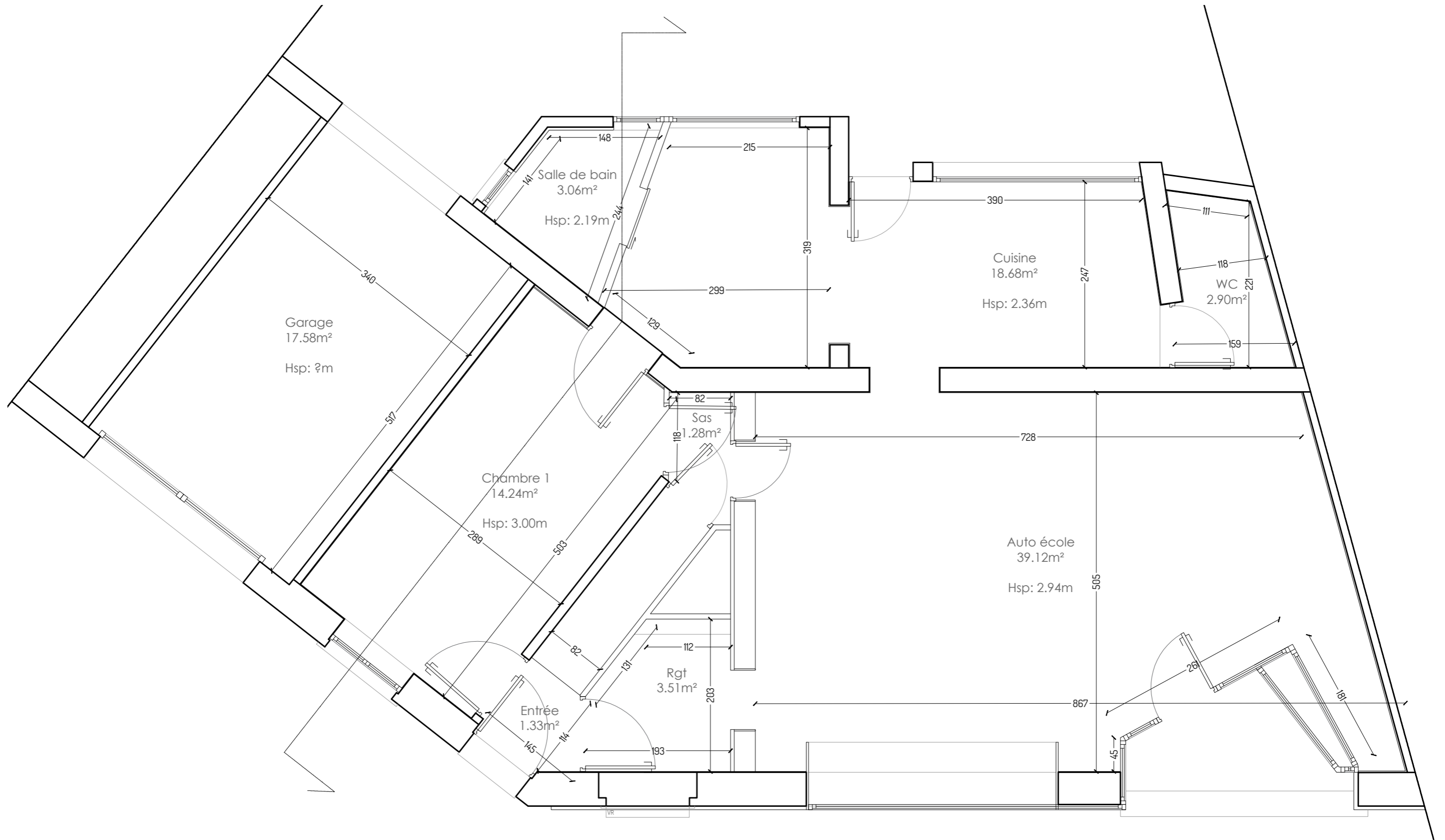
DATE : 07.01.2025

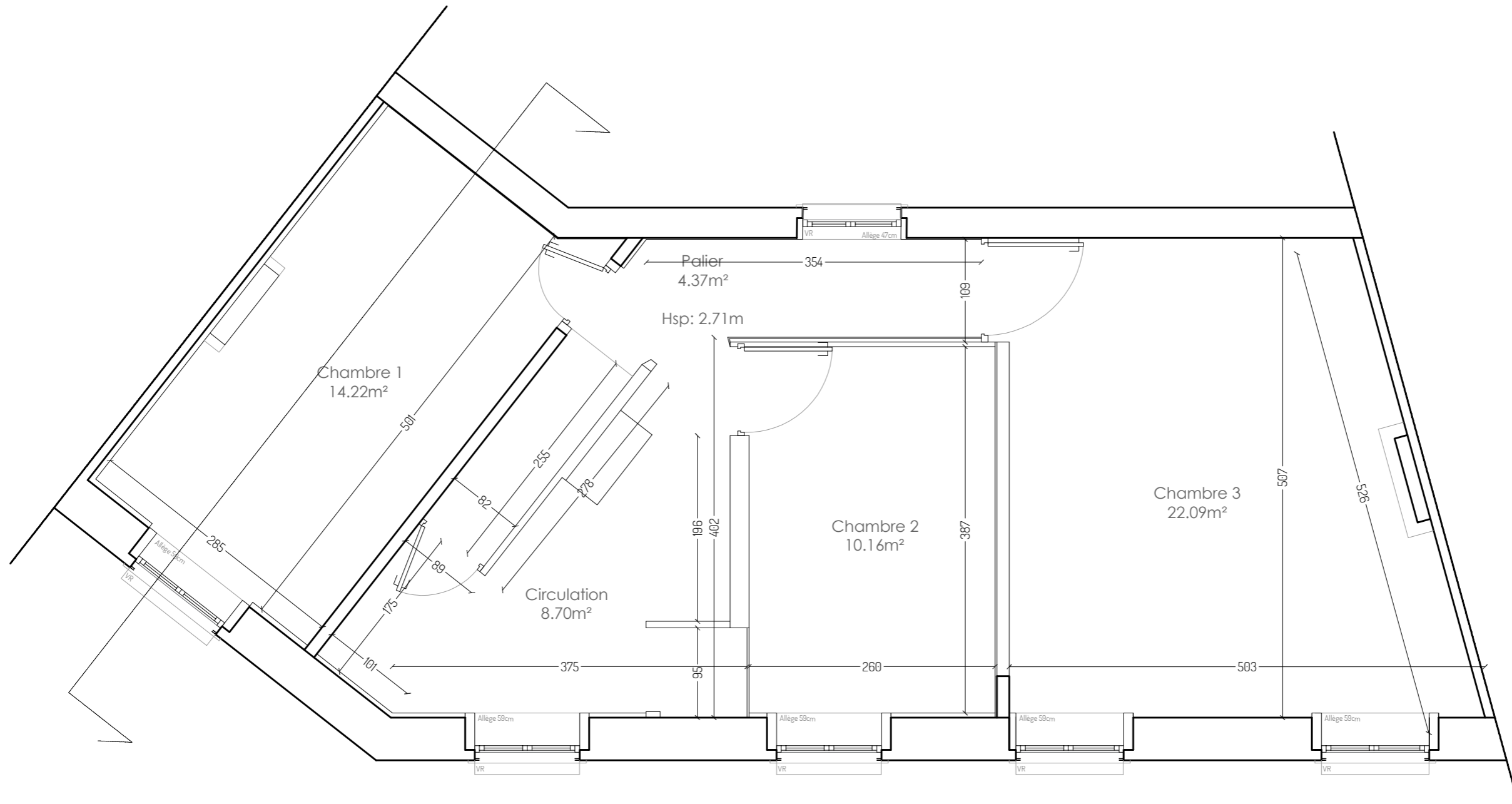


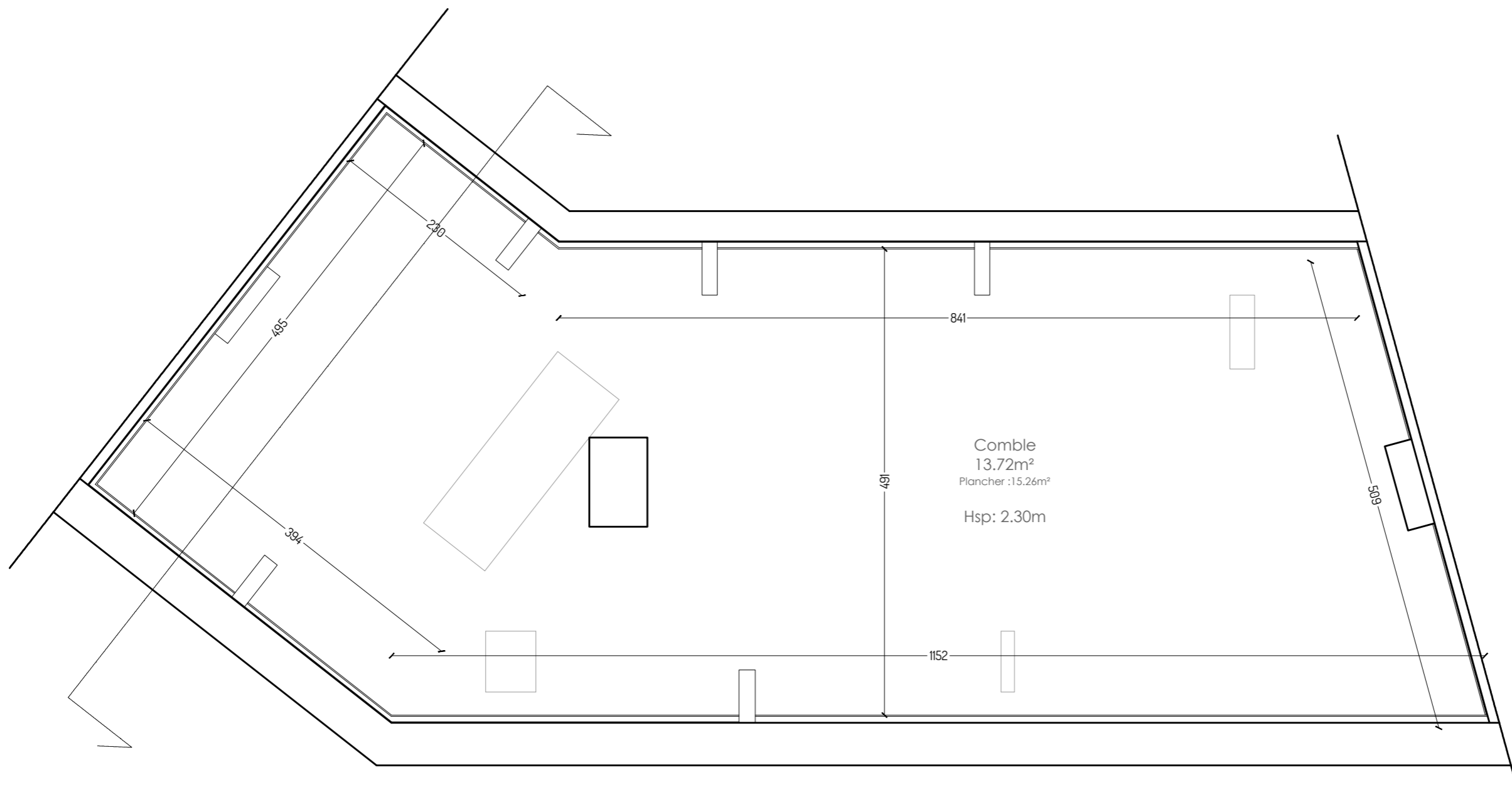


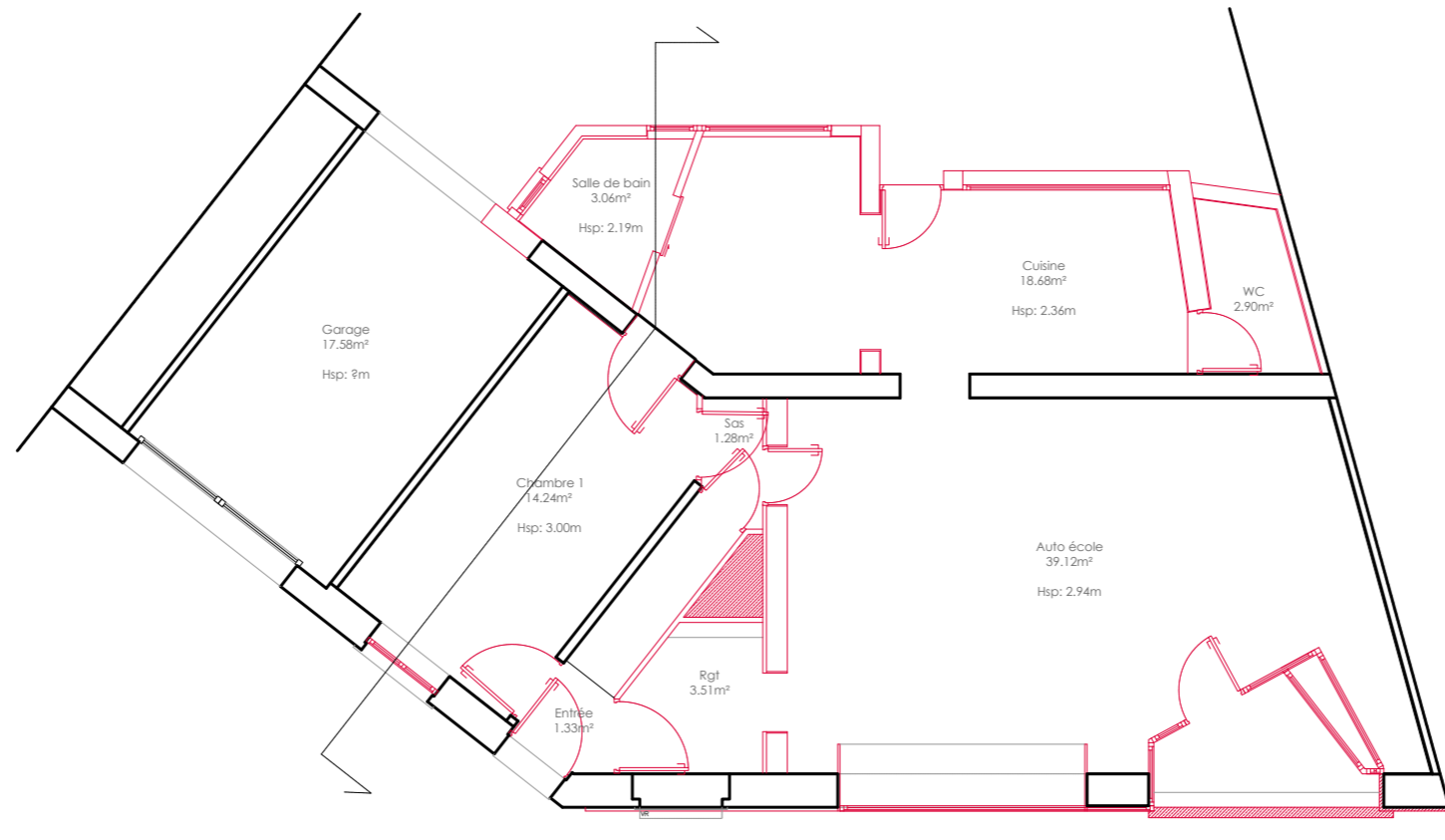








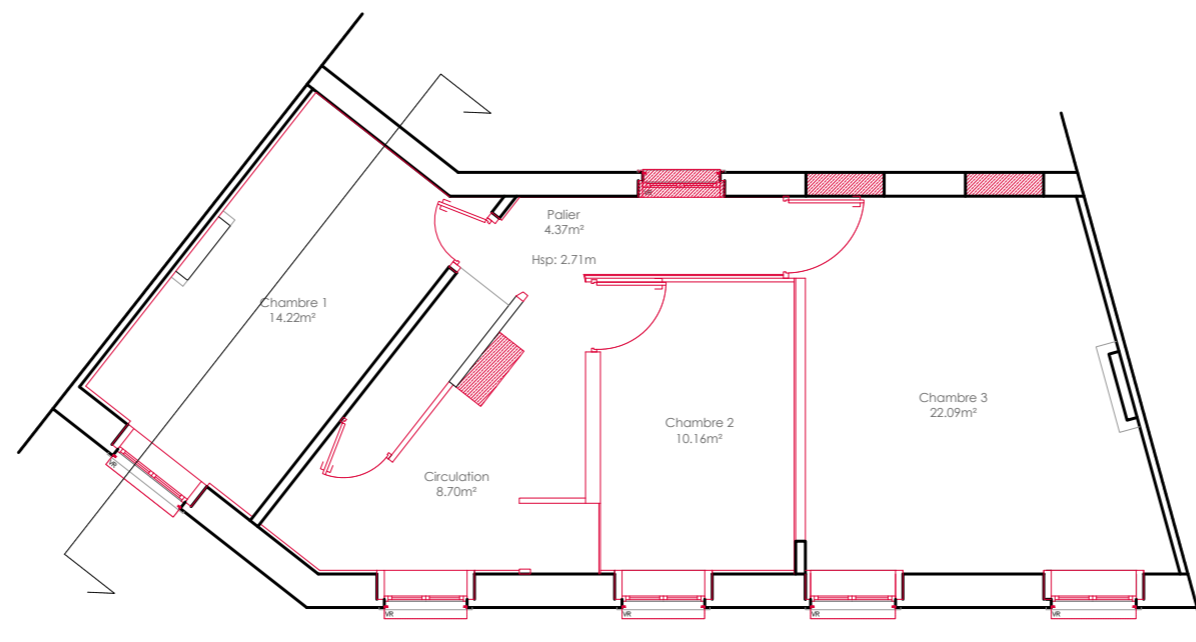




Légende

- ELEMENTS A DEPOSER

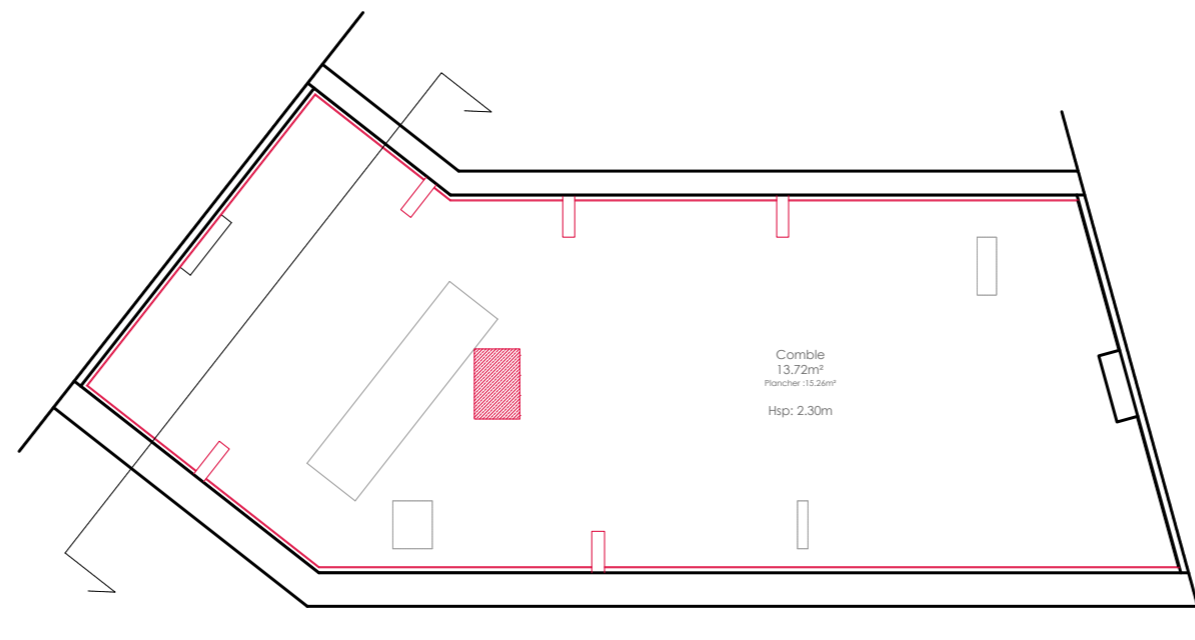
- CONDUIT DE CHEMINEE ET ABOUT DE MARCHE A DEPOSER



Légende

- ELEMENTS A DEPOSER

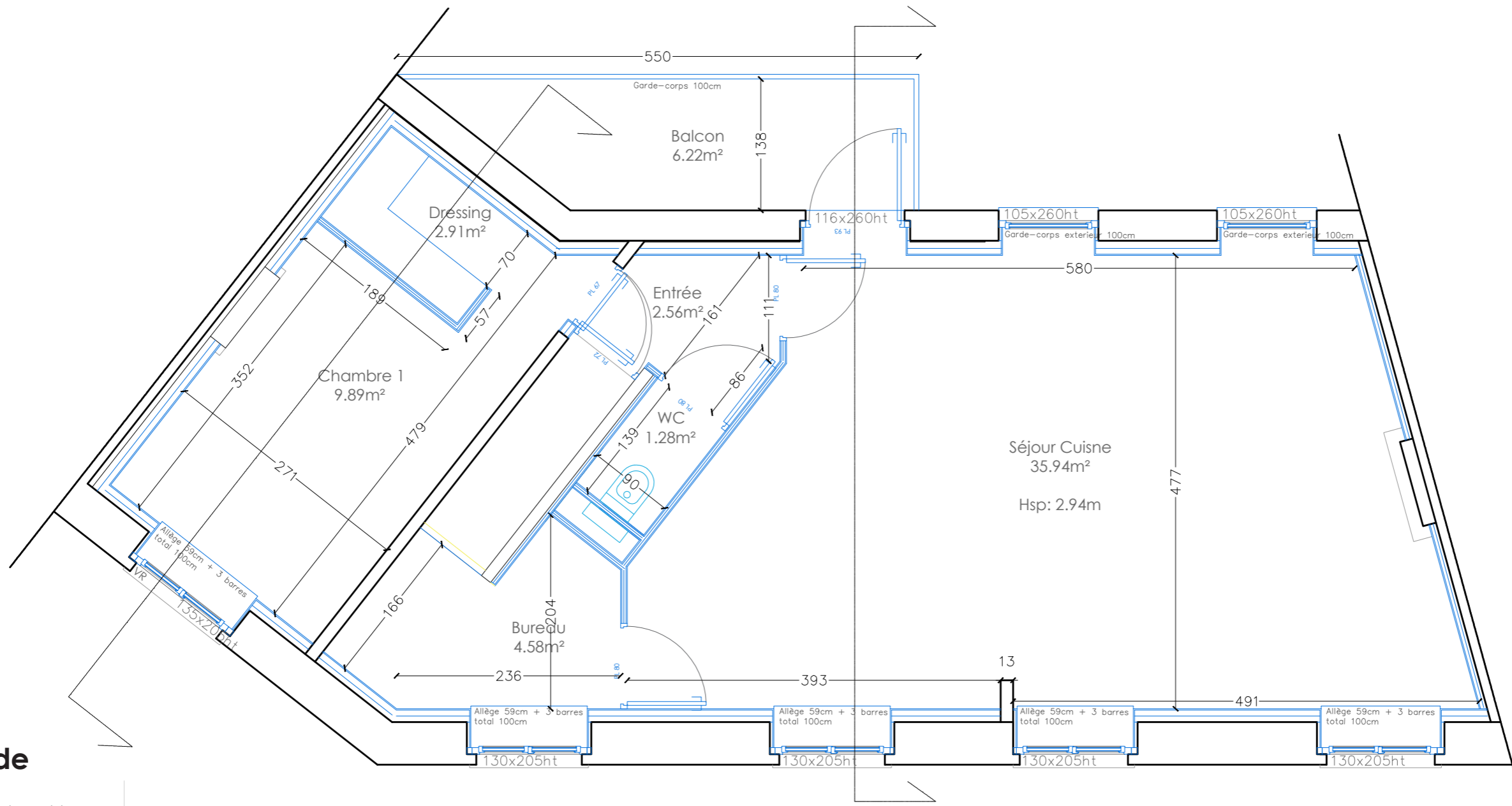
- CONDUIT DE CHEMINEE ET ABOUT DE MARCHE A DEPOSER



Légende

- ELEMENTS A DEPOSER

- CONDUIT DE CHEMINEE ET ABOUT DE MARCHE A DEPOSER



Légende

- Plafond comble 260mm
- Doublage 120mm
- Cloison 70mm
- Cloison SAD 180





Légende

- A Peinture soubassement
- B Brique moucharrabieh
- C Briquette collée
- D Brique dito existant



**DOSSIER PRO
IND E**

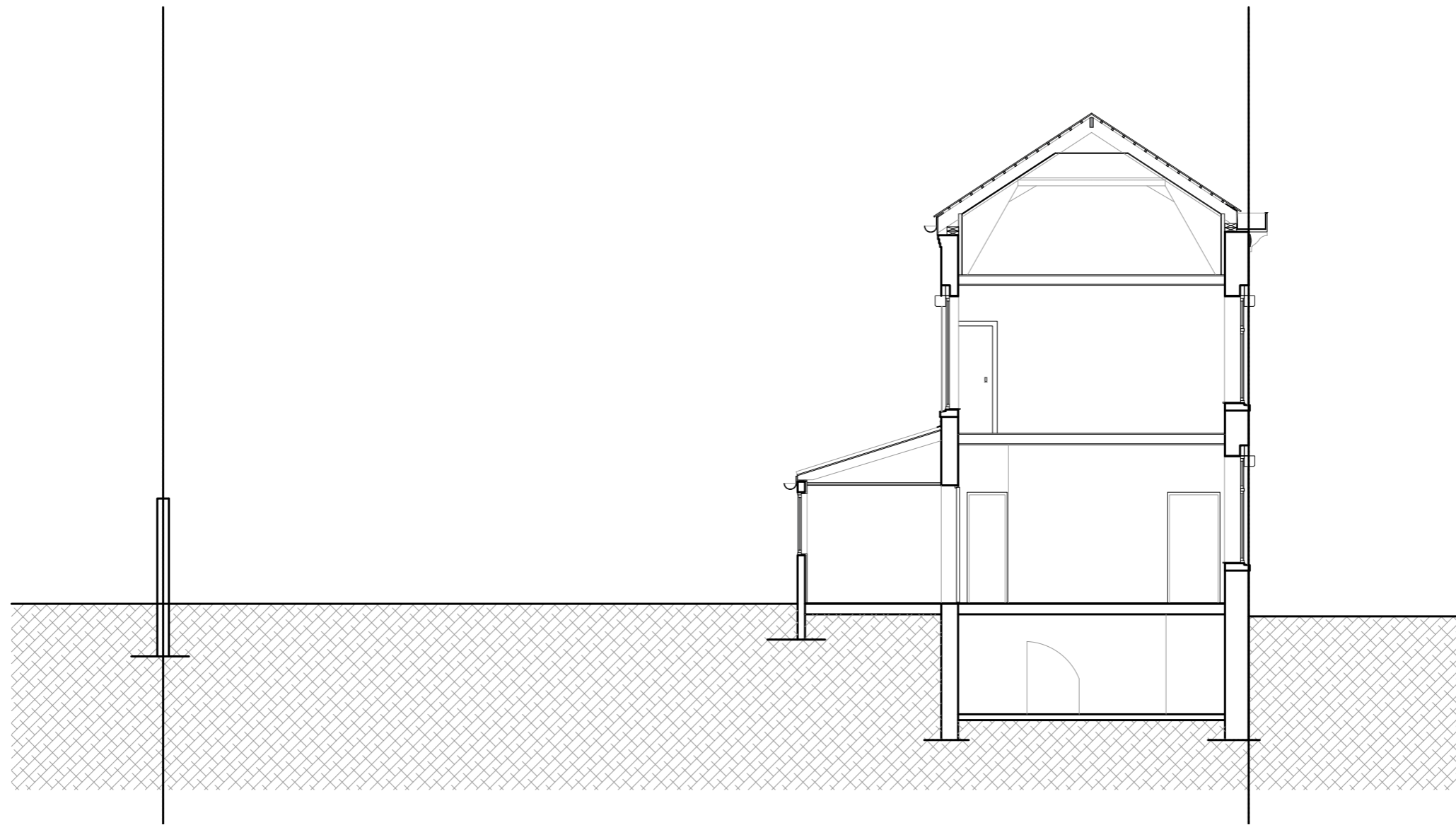
Date : 02.10.2024

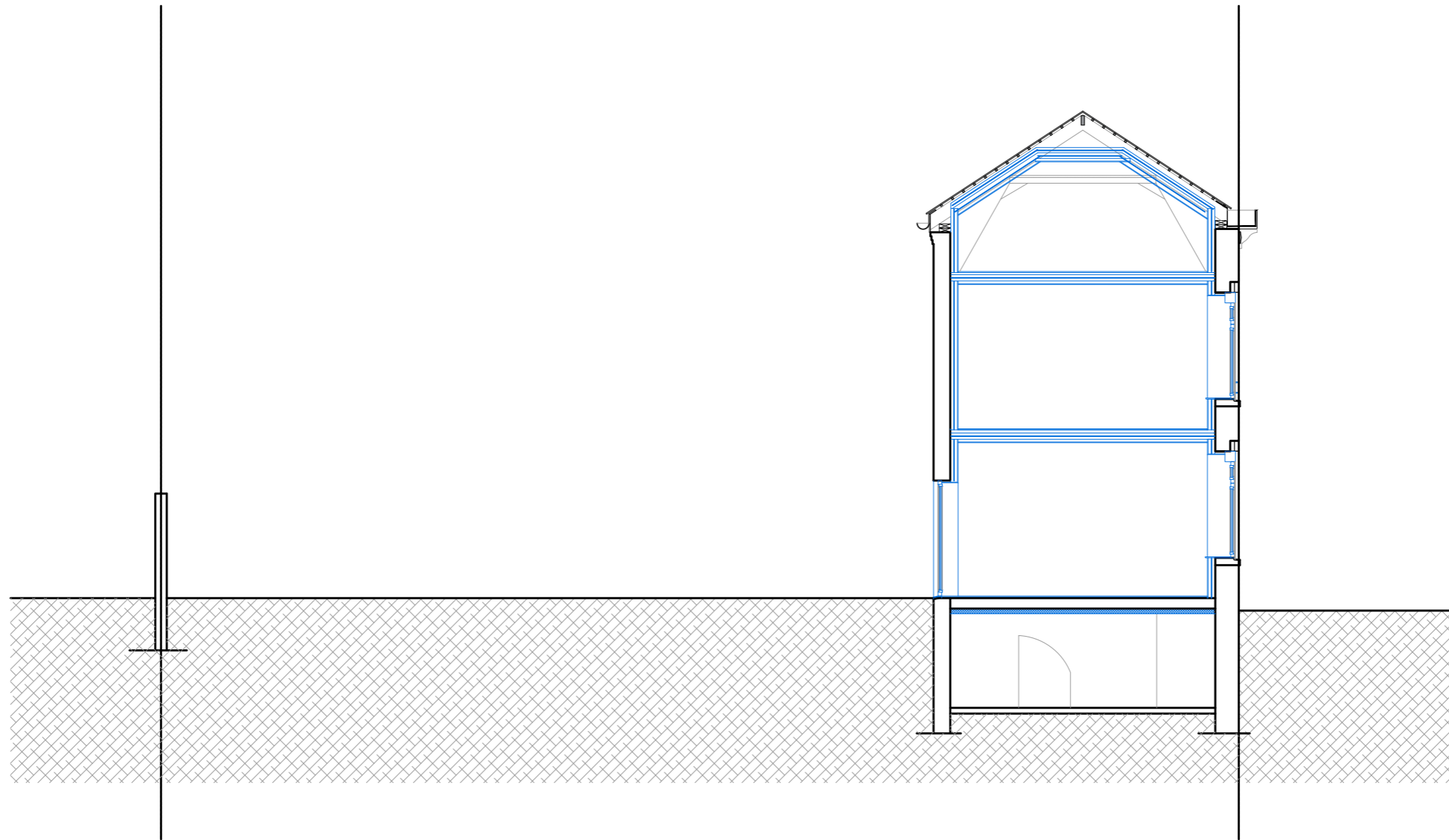
Mr et Mme MOUMINOUX

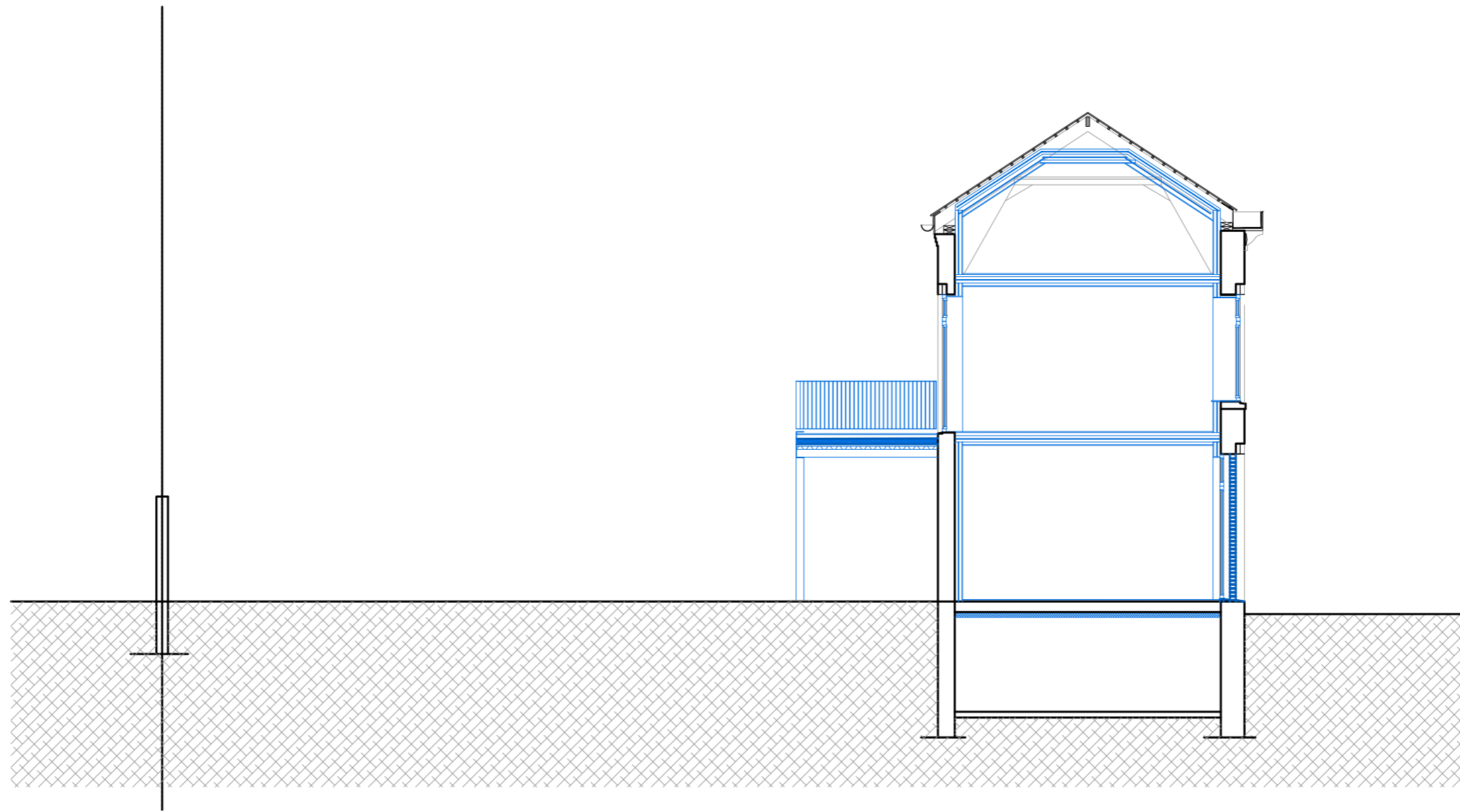
67,69 rue Pasteur
62 680 MERICOURT

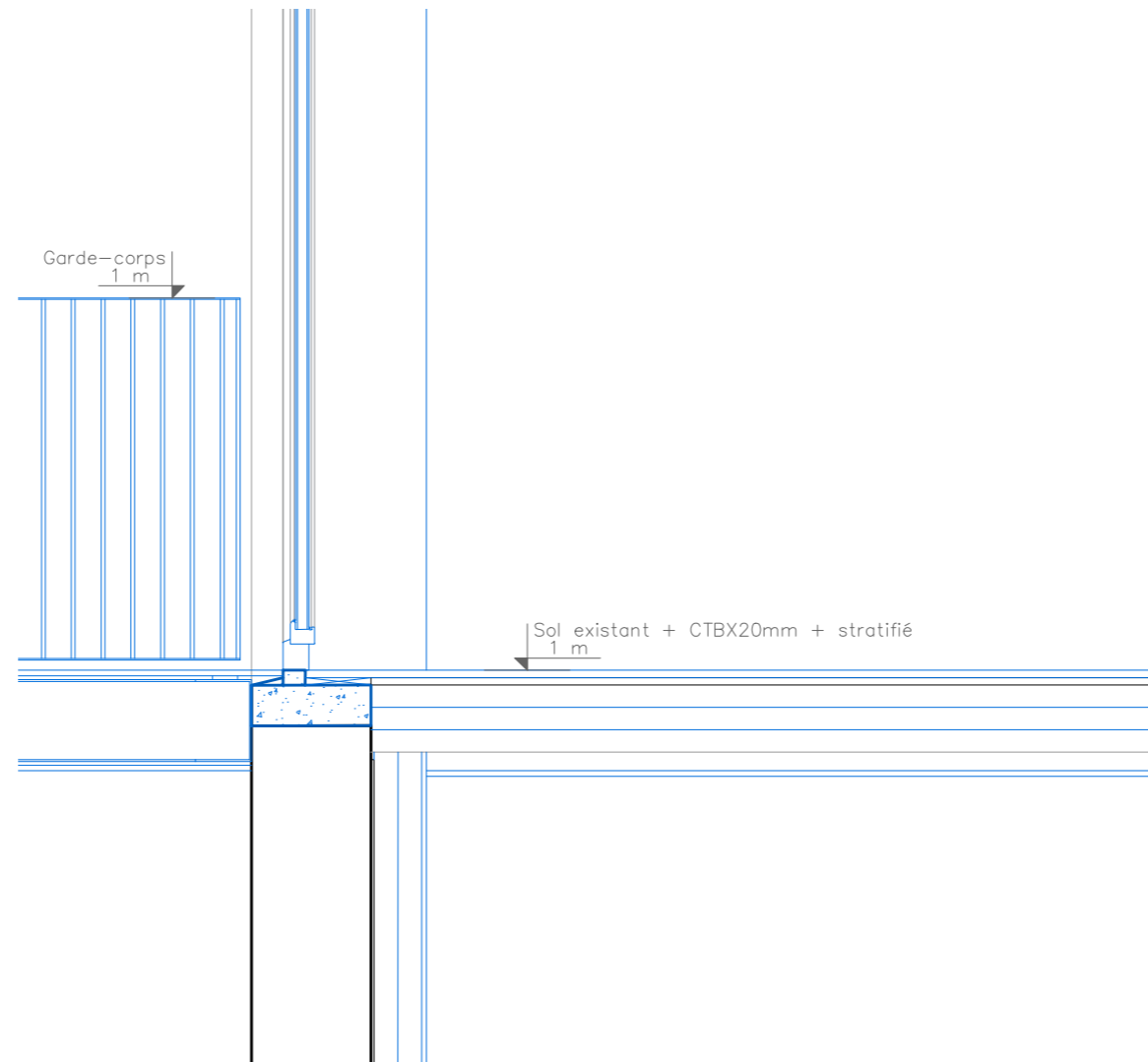
PROJET
Façade rue
échelle : 1/100e













VUE 69 RUE PASTEUR



VUE 67 RUE PASTEUR



VUE DEPUIS LE JARDIN



Rez -de-chaussée



1er étage



Comble



Cour extérieur

