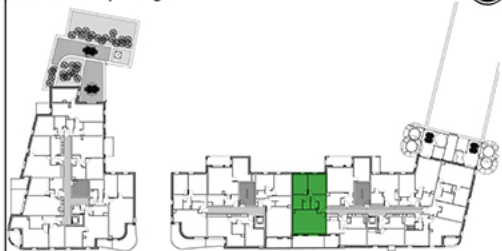


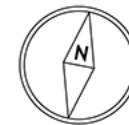
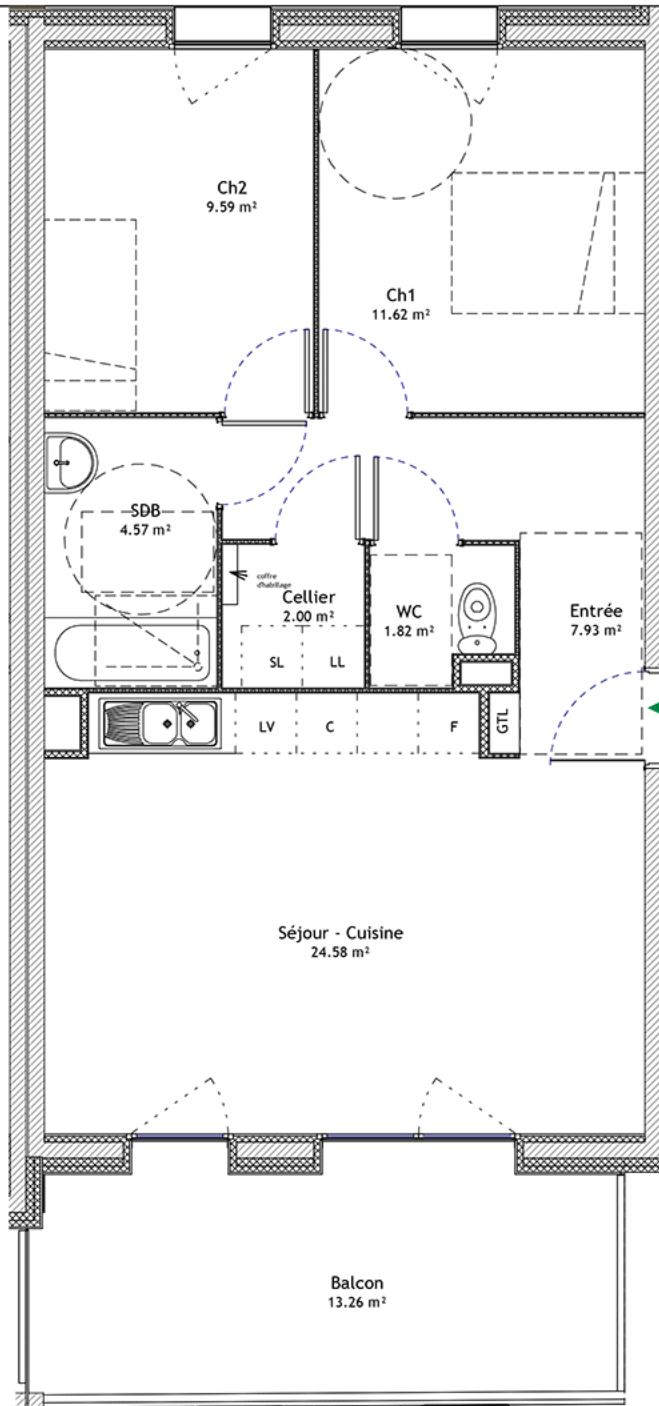


Plan de repérage



Appartement D-4-1

4ème Etage - Entrée D	Type 3
Séjour/Cuisine	24.58 m ²
Chambre 1	11.62 m ²
Chambre 2	9.59 m ²
Salle de bain	4.57 m ²
WC	1.82 m ²
Entrée	7.93 m ²
Cellier	2.00 m ²
Total m²	62.11 m²
Balcon	13.26 m ²



D-4-1 T3
62.11m²